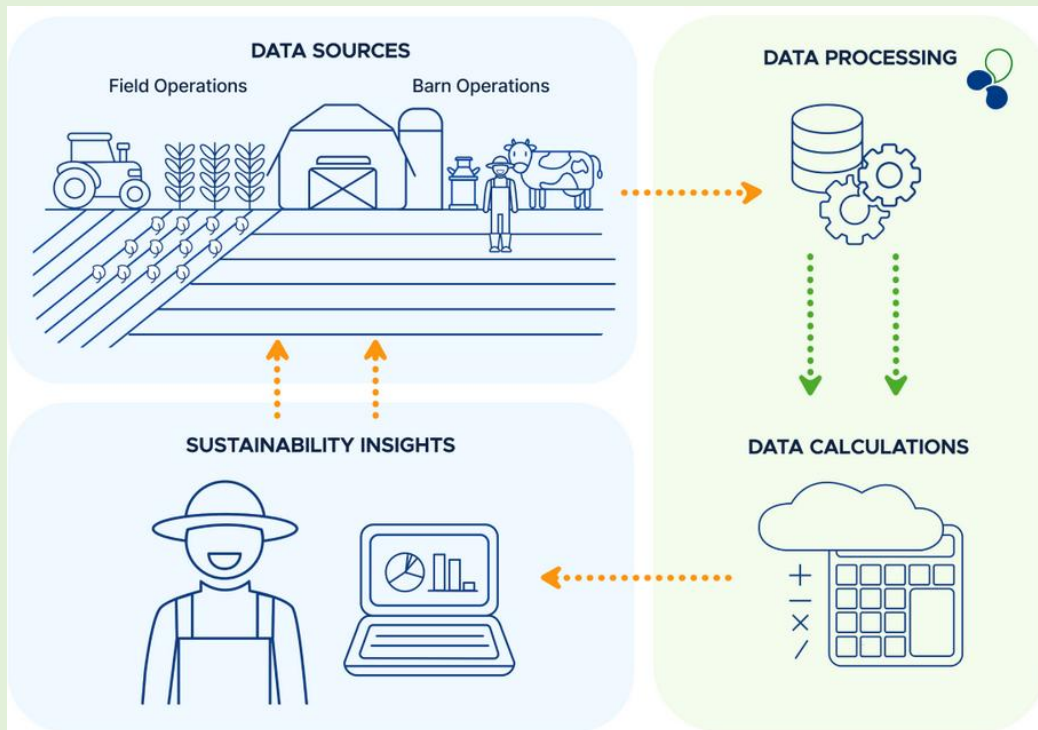


Doorbraakinnovatie van John Deere & DeLaval

John Deere and DeLaval launch groundbreaking Milk Sustainability Center

Combining farm land & dairy data in
one tool



Ambition

We help dairy farmers make sustainability
improvements through reduced CO₂e and
increased NUE.

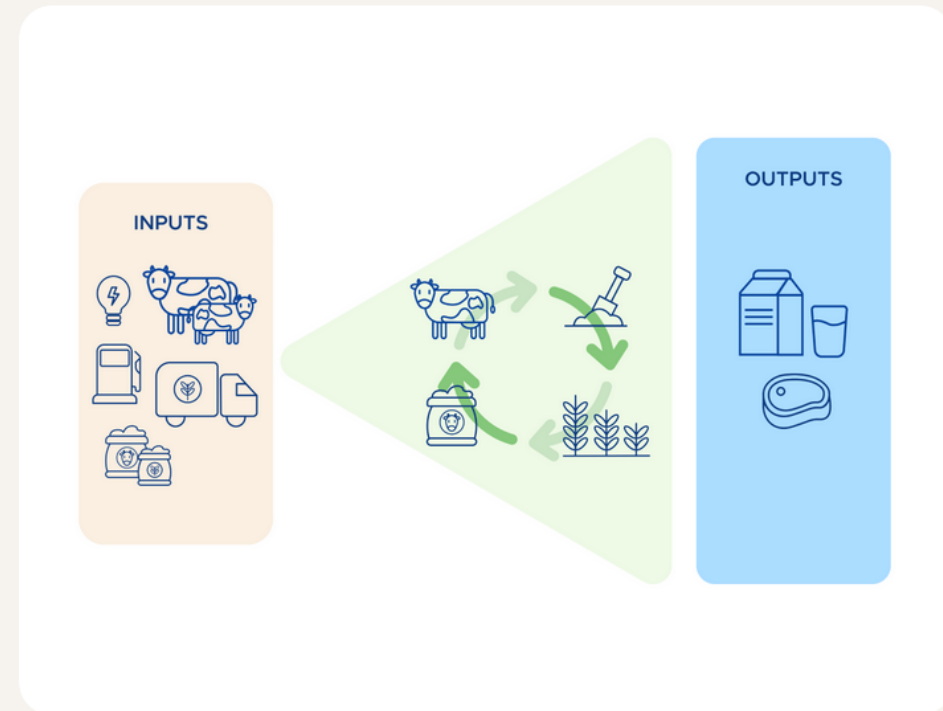
Doorbraakinnovatie van John Deere & DeLaval

Why are NUE and CO₂e important measures for your sustainability?

Nutrient Use Efficiency (NUE)

The NUE indicates the ratio of input and output of nitrogen, phosphorous, and potassium.

Using your nutrients more efficiently will decrease your environmental footprint and increase your profitability: Doing more with less



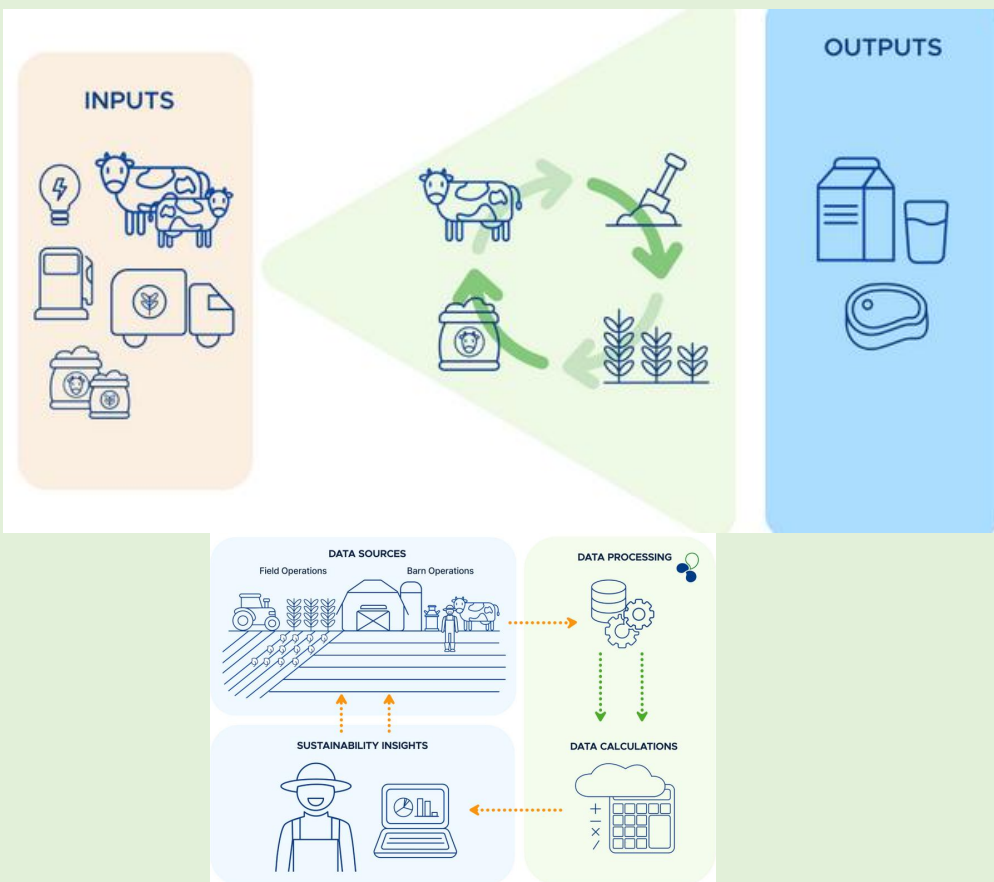
CO₂ equivalent (CO₂e)

CO₂e is a scientific terminology and a way to normalize various greenhouse gases to make nitrous oxide (N₂O), methane (CH₄), and carbon dioxide (CO₂) comparable.

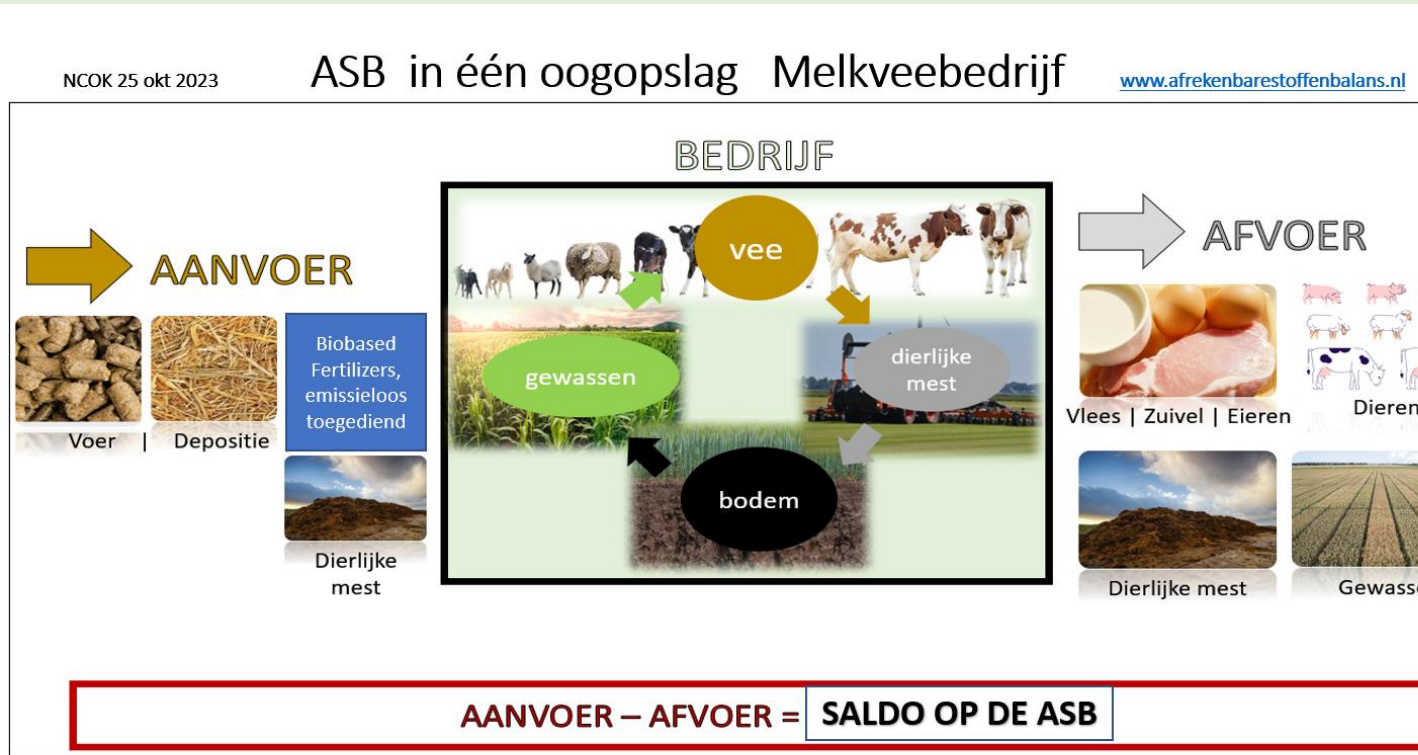
De doorbraakinnovatie van John Deere & DeLaval levert de gegevens voor de Afrekenbare StoffenBalans voor N en CO2e

John Deere and DeLaval launch groundbreaking Milk Sustainability Center

Combining farm land & dairy data in one tool



DE ASB IS ONTWIKKELD ALS INSTRUMENT VOOR EMISSIEREDUCTIE VAN STOFFEN, ZOALS NUTRIENTEN EN CO2-equivalent



ASB = *premie voor lager dan gemiddeld saldo * heffing voor hoger dan gemiddeld saldo

Slotopmerkingen

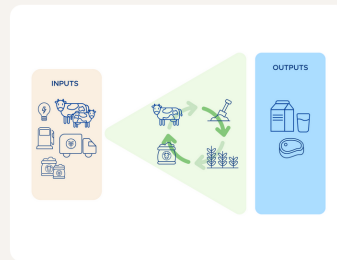
John Deere and DeLaval launch groundbreaking Milk Sustainability Center

Why are NUE and CO₂e important measures for your sustainability?

Nutrient Use Efficiency (NUE)

The NUE indicates the ratio of input and output of nitrogen, phosphorous, and potassium.

Using your nutrients more efficiently will decrease your environmental footprint and increase your profitability. Doing more with less.



CO₂ equivalent (CO₂e)

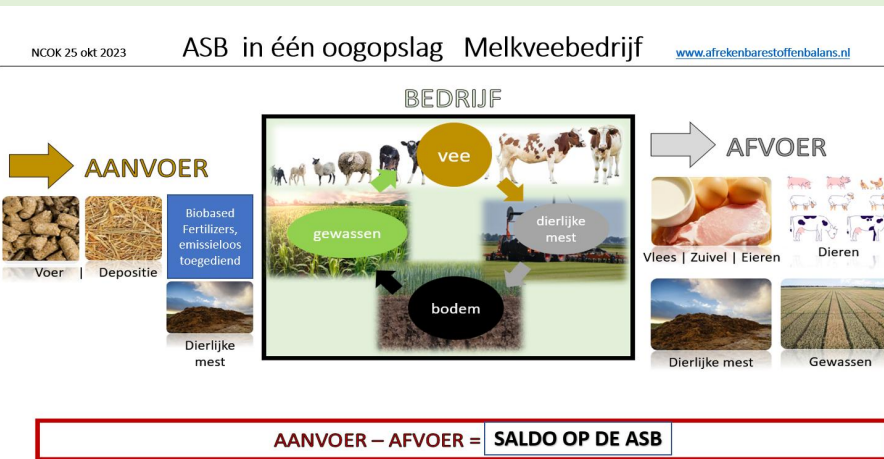
CO₂e is a scientific terminology and a way to normalize various greenhouse gases to make nitrous oxide (N₂O), methane (CH₄), and carbon dioxide (CO₂) comparable.

NUE EN CO₂e CERTIFICEREN mbv ASB-saldo !



Hoofdroutes naar fossielvrije meststoffen in 2035:

- 1 Gezonde bodem
- 2 Nutriëntenefficiëntie
- 3 Circulaire meststoffen
- 4 Verlagen fossiele input



ASB = *premie voor lager dan gemiddeld saldo * heffing voor hoger dan gemiddeld saldo