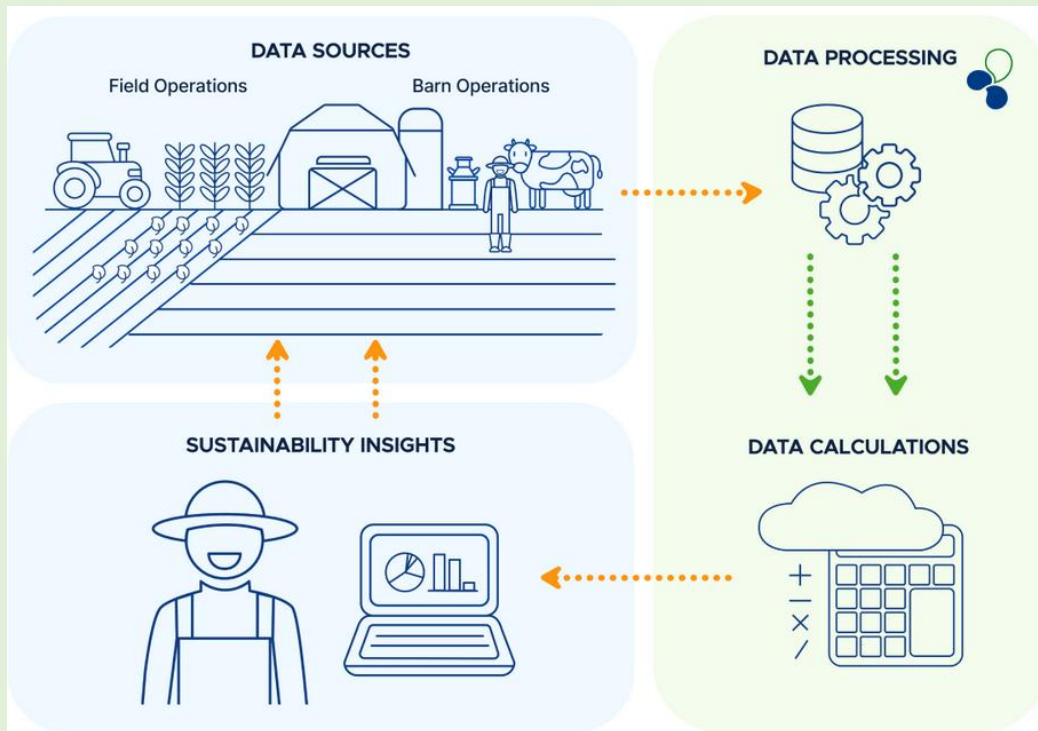


Doorbraakinnovatie van John Deere & DeLaval

John Deere and DeLaval launch groundbreaking Milk Sustainability Center

Combining farm land & dairy data in
one tool



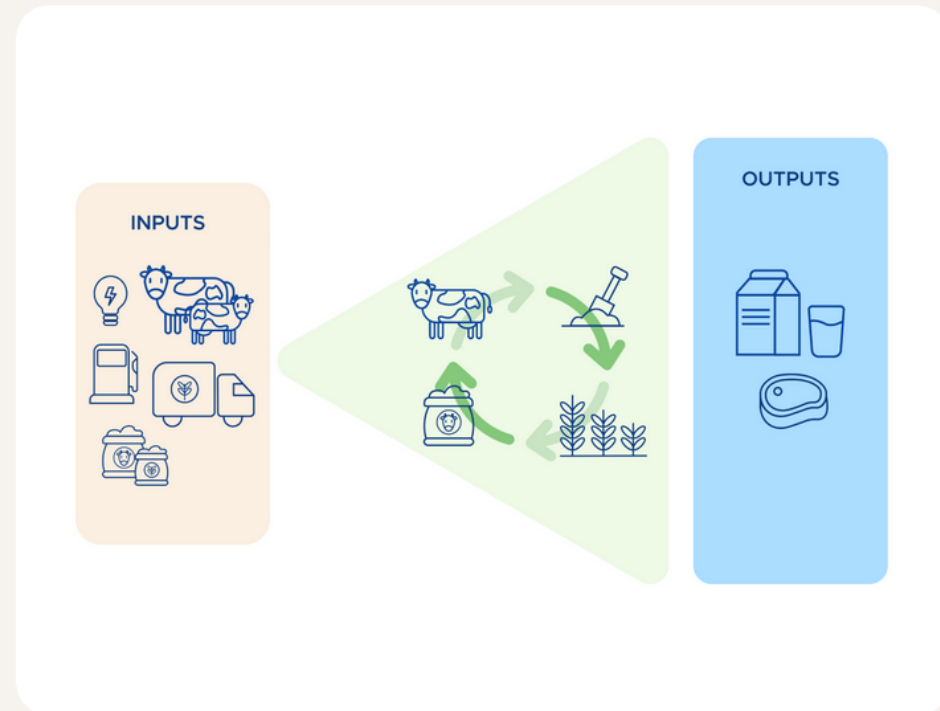
Why are NUE and CO₂e important measures for your sustainability?

Nutrient Use Efficiency (NUE)

The NUE indicates the ratio of input and output of nitrogen, phosphorous, and potassium.

Using your nutrients more efficiently will decrease your environmental footprint and increase your profitability: Doing more with less

<https://www.milksustainabilitycenter.com/nl/>



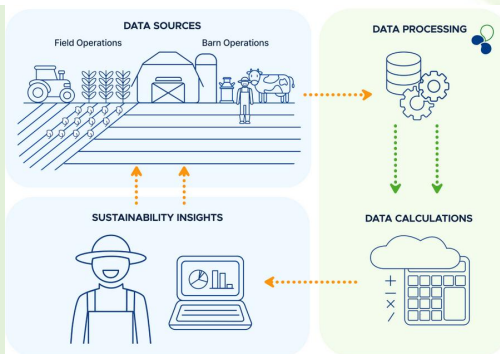
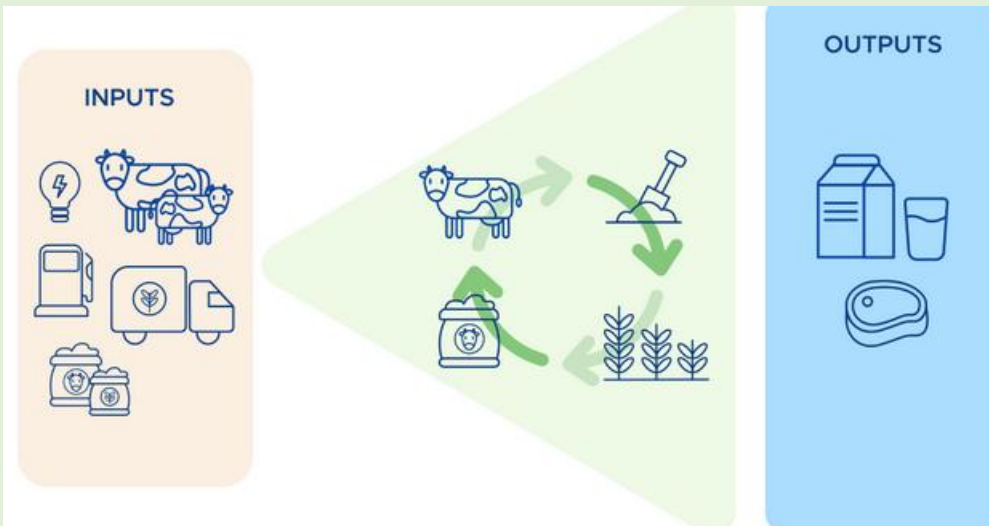
CO₂ equivalent (CO₂e)

CO₂e is a scientific terminology and a way to normalize various greenhouse gases to make nitrous oxide (N₂O), methane (CH₄), and carbon dioxide (CO₂) comparable.

De doorbraakinnovatie van John Deere & DeLaval levert de gegevens voor de Afrekenbare StoffenBalans voor N en CO2e

John Deere and DeLaval launch groundbreaking Milk Sustainability Center

Combining farm land & dairy data in one tool



MSC IS ONTWIKKELD ALS INSTRUMENT VOOR :

STOFFSTROMBILANZ in DUITSLAND

Für wen gilt die Stoffstrombilanzverordnung

Seit dem 1. Januar 2023 gilt die Verordnung

Afrekenbare StoffenBalans in NEDERLAND

